

FACULTY DEVELOPMENT

JUNE 2025

OFFICE OF ACADEMIC AFFAIRS

RECRUITING SPEAKERS FOR FALL 2025

If you have a topic related to medical education in any aspect of the continuum of undergraduate, graduate, or continuing professional development, please reach out to Alice Fornari, afornari@northwell.edu

Volunteer logistics and preparation will be mentored by Alice Fornari

Note, this can be added to your CV as an academic presentation

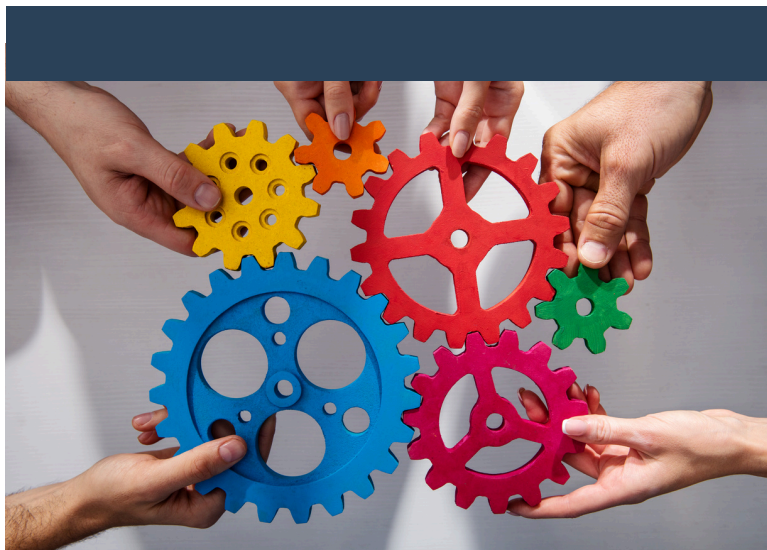
MED ED JOURNAL CLUB



GRAND ROUNDS SERIES IN CLINICAL DEPARTMENTS

Medical Education Grand Rounds offering for the 2025-26 Academic Year. Topics can include IPEC, Emotional Intelligence, Just in Time Learning and Teaching Practices, Professionalism, Flourishing, and topics of choice in your clinical discipline.

Contact, Alice Fornari,
afornari@northwell.edu



JUST IN TIME MICROLEARNING

Faculty Development offering, "Microlearning" 15 minutes synchronously on a virtual platform near the end of your regularly scheduled faculty meetings, to review Just in Time Teaching Tips relevant to your clinical environments and learners.

By Invitation only, email
maffa@northwell.edu



KNN REIMAGINE: FLOURISHING 1.5



A unique opportunity to explore character-based leadership and cultivate caring connections to support practical wisdom. 6 monthly 90-minute virtual sessions starting October 2025. We welcome diverse GME participants to experience the KNN Professional Development Content. For more information contact [**afornari@northwell.edu**](mailto:afornari@northwell.edu)

JITT INFOGRAPHIC APP

We are asking for feedback on the JiTT App in preparation for its 7th version. Please help us to consistently improve the content and delivery of these microresources to support microteaching. Below is the link to a brief, anonymous, 5-minute survey. Please take a moment to offer your assessment. Thank you in advance.

[**COMPLETE THE SURVEY HERE**](#)

UPCOMING PROFESSIONAL DEVELOPMENT 2025/26

ATLAS, **ERSD**, and **PIAT** programs for the 2024/25 year have been successfully completed. These will return starting in September 2025. Look out for more information in the coming weeks!

MAP-IT 1.0 CORPORATE & CLINICAL



MAP-IT champions humanism in healthcare, aligning with Northwell's patient experience initiatives. Develop essential skills in communication, compassion, and teamwork. Ready to embark on this exciting journey? Contact Jennifer Groh, [**jgroh@northwell.edu**](mailto:jgroh@northwell.edu), for more information

PUBLICATIONS OF THE MONTH

- [Program and Institutional Coordinator Well-Being: Results From a National Survey](#)
- [Applications of Artificial Intelligence for Nonpsychomotor Skills Training in Health Professions Education: A Scoping Review](#)
- [Take Charge of Your Professional Network of Colleagues to Succeed in Academic Medicine](#)

