



DONALD AND BARBARA
ZUCKER SCHOOL of MEDICINE
AT Hofstra/Northwell

**Graduation with Distinction in Community Engagement
Application Review Scoring Rubric
2021-2022 Cycle I**

Student Name: **Student's Role in Project:**

Title of Community Engagement Project:

1) Please verify that all information is included in the application by checking each element below:

- ☐ The project has significant potential impact.
- ☐ The initiative or scope of work adheres to the principles of community engagement.
- ☐ The design of the project/work is community-informed and addresses a significant need.
- ☐ The project has a clear evaluation plan.
- ☐ The project has a clear sustainability plan.
- ☐ Student held a leadership role or individually played a key role in the work accomplished (this leadership role can be accomplished as part of an existing project).

2) Please verify the student made a substantial contribution to the following:

- ☐ the formulation of the project/initiative **OR** ☐ the design of co-partnered project
- ☐ involvement in the service activities of project
- ☐ preparation of a summative scholarly product

3) Please rate the project's level of community engagement (Please refer to Figure 1.1 Community Engagement Continuum):

- ☐ 4 - Project demonstrated strong bidirectional relationship with health outcomes affecting broader community, strong bidirectional trust was built. (Shared Leadership)
- ☐ 3 - Project demonstrated community involvement which includes a deepened partnership and trust building. (Collaborate)
- ☐ 2 - Project demonstrated better community involvement with visibility of the partnership, participatory communication, and increased cooperation. (Involve)
- ☐ 1 - Project demonstrated more community involvement with entities by sharing information and developing bi-directional connections. (Consult)
- ☐ 0 - Project demonstrated some community involvement with a focus on information sharing and establishing channels for outreach. (Outreach)

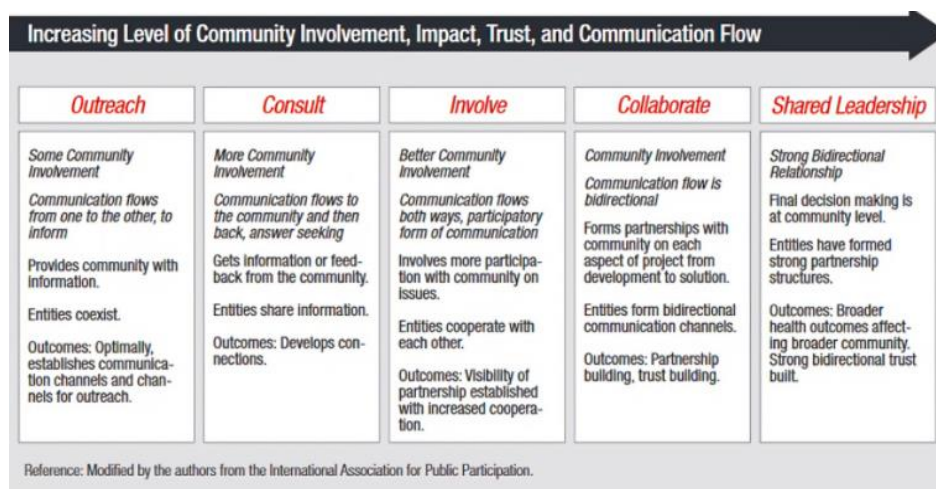


Figure 1.1. Community Engagement Continuum



DONALD AND BARBARA
ZUCKER SCHOOL of MEDICINE
AT Hofstra/Northwell

**Graduation with Distinction in Community Engagement
Application Review Scoring Rubric
2021-2022 Cycle I**

4) Please rate the measurable impact of this project (Please refer to Figure 1.2 The KirkPatrick Model):

- ☐ 4- Project led to a significant change that has positively impacted community member participants at large.
- ☐ 3 - Project led to positive observable behavioral changes amongst community member participants.
- ☐ 2 - Project led to increased knowledge and/or awareness amongst community member participants.
- ☐ 1 - Project resulted in a favorable reaction and/or engagement from community member participants.

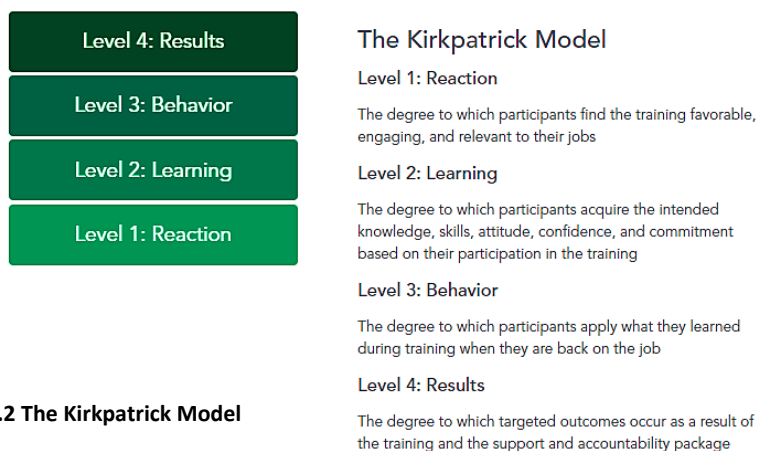


Figure 1.2 The Kirkpatrick Model

5) Please rate the student's design of the project:

- ☐ 4- Student demonstrated thorough awareness of the community, incorporated community-identified goals by primary data collection (i.e., focus groups, surveys) and addressed a significant need.
- ☐ 3 - Student demonstrated broad awareness of the community, articulated community-identified goals, and developed plan to address a significant need.
- ☐ 2 - Student sought to become aware of the community, attempted to identify a community goal that could have potential to address a significant need.
- ☐ 1 - Student created a self-identified project which lacks community awareness and impact.

6) Final Recommendation: Do you approve this student for a Distinction in Community Engagement? This approval means the student will be asked to give an oral presentation. Please calculate the student's final score using ratings from Q3, Q4 and Q5.

FINAL SCORE _____

- ☐ Yes
- ☐ No

Reviewer Name: _____